

Scaled data based on original data using
LM-79-08 Approved Method: Electrical and Photometric Measurements of Solid-
State Lighting Products

Test Report Prepared for
Cooper Lighting Solutions
(formerly Eaton)

Brand: INVUE

Report Number: P151649

Luminaire Tested: **VWM-E03-LED-E1-SL4-HSS-7030**

Issue Date: 03/03/2020

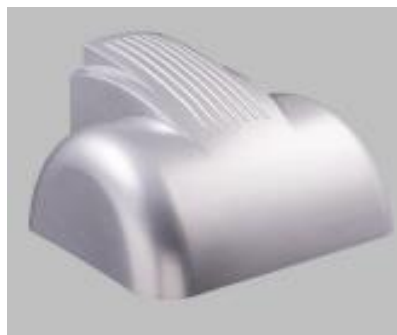
Test Information

Test Method: LM-79-08
Report Number: P151649
REPORT IS SCALED FROM IESNA LM-79-08 TEST DATA (P33728)
Test Lab: INNOVATION CENTER-P3
Issue Date: 03/03/2020
Manufacturer: COOPER LIGHTING SOLUTIONS (FORMERLY EATON)
Product Line: INVUE
Catalog Number: VWM-E03-LED-E1-SL4-HSS-7030
Description: VISION WALL MEDIUM LED LUMINAIRE
(3) LIGHTBARS WITH AccuLED OPTICS - TYPE 4 W/ SPILL LIGHT CONTROL AND HOUSE SIDE SHIELD
Light Source: (63) 3000K CCT, 70 CRI LEDs
Ballast/Driver: -

Summary

Lumens per Lamp: N/A
Luminaire Lumens: 5575.5 lumens
Efficiency: N/A
Efficacy: 74.1 lumens/watt
Luminous Opening: Rectangular (W 0.5' x L: 1' x H: 0')
IES Classification: Type IV - Short - Semi-Cutoff
BUG Rating: B0 - U0 - G2

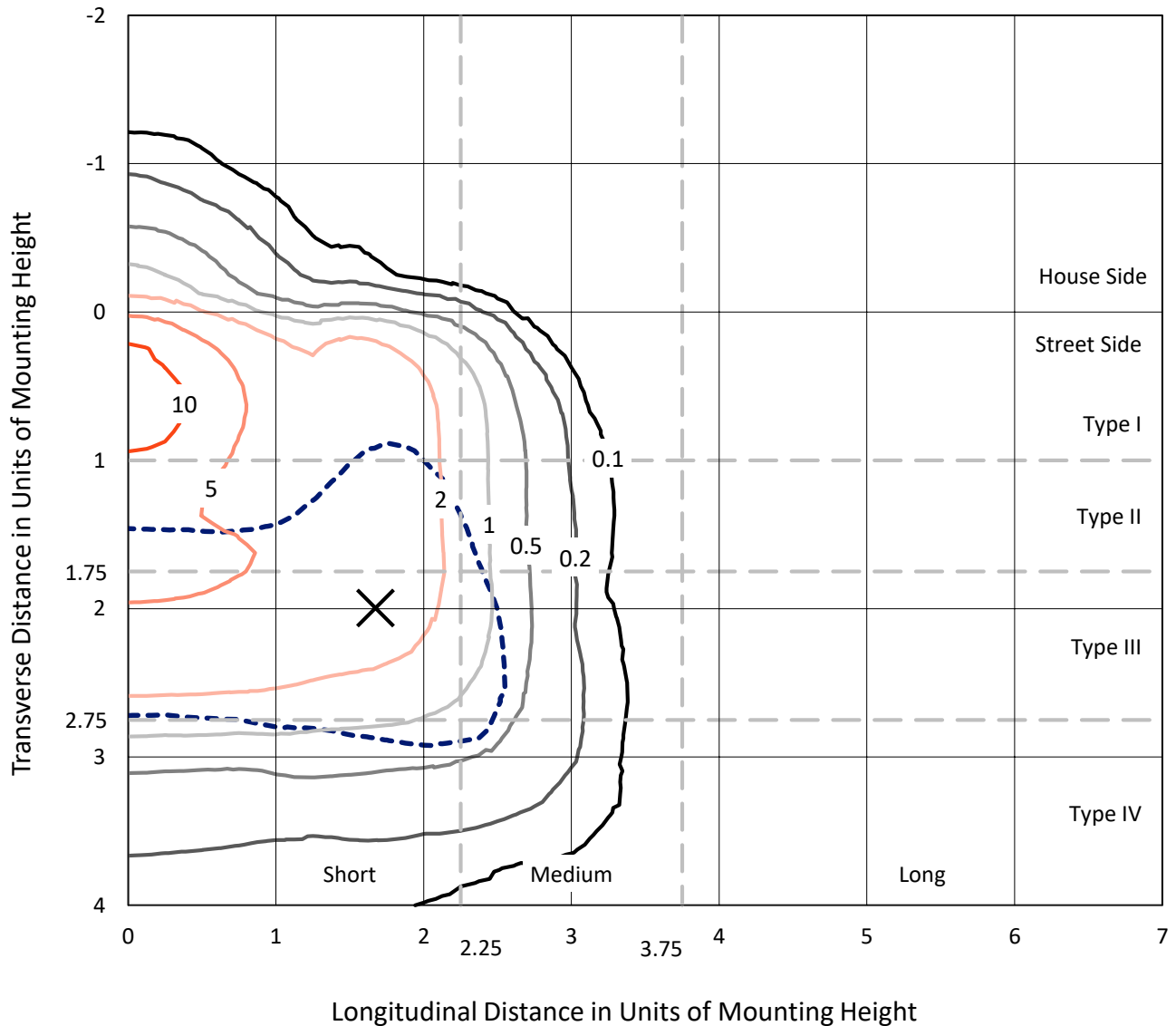
Input Watts (W): 75.2
Input Voltage (V): NR
Input Current (Ain): NR
Voltage Rise (V): NR
Power Factor: NR
Total Harmonic Distortion (THDi): NR
Frequency (hertz): 60
Stabilization Time: NR
Operation Time: NR
Ambient Temperature (°C): NR
Test Distance: 25 FT



REPORT NUMBER: P151649
 CATALOG NUMBER: VWM-E03-LED-E1-SL4-HSS-7030

Iso-Footcandle Lines of Horizontal Illumination

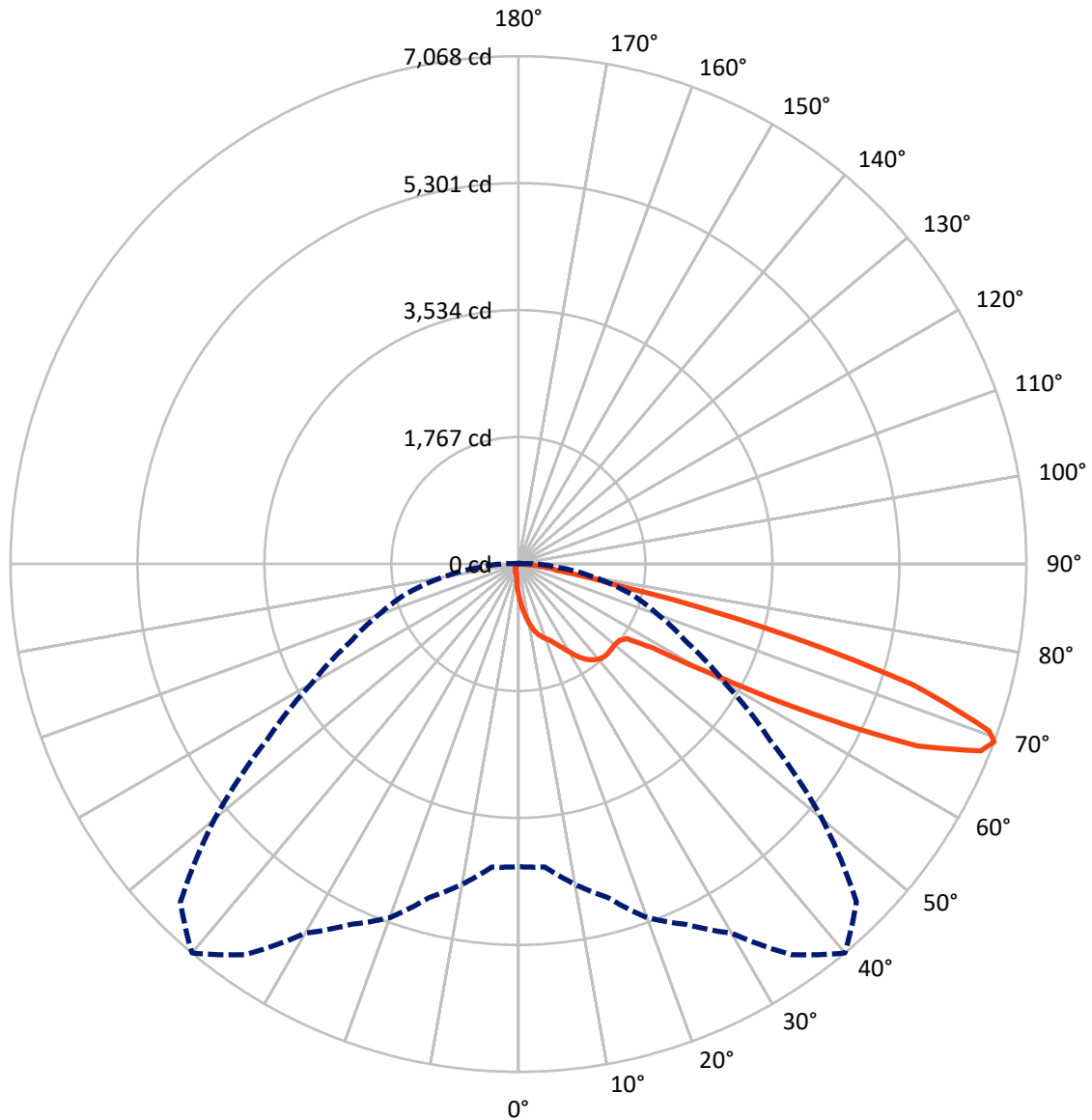
× Max cd
 - - - 1/2 Max cd



Based on 10 foot mounting height. Maximum calculated value = 12.5 fc
 Type IV - Short - Semi-Cutoff

REPORT NUMBER: P151649
CATALOG NUMBER: VWM-E03-LED-E1-SL4-HSS-7030

Luminous Intensity Polar Plot



— Vertical Plane Through 40-Deg Lateral - - - Horizontal Cone Through 69-Deg Vertical

REPORT NUMBER: P151649

CATALOG NUMBER: VWM-E03-LED-E1-SL4-HSS-7030

FLUX DISTRIBUTION:

		Downward	Upward	Total
House Side	Lumens	166.0	0.0	166.0
	% Fixture	3.0	0.0	3.0
Street Side	Lumens	5409.4	0.0	5409.4
	% Fixture	97.0	0.0	97.0
Total	Lumens	5575.5	0.0	5575.5
	% Fixture	100.0	0.0	100.0

Coefficient of Utilization

ZONAL LUMENS:

Zone	Lumens	% Fixture
0°-10°	43.3	0.8
10°-20°	149.2	2.7
20°-30°	285.6	5.1
30°-40°	474.9	8.5
40°-50°	642.7	11.5
50°-60°	1005.1	18.0
60°-70°	2066.4	37.1
70°-80°	831.5	14.9
80°-90°	76.9	1.4
90°-100°	0.0	0.0
100°-110°	0.0	0.0
110°-120°	0.0	0.0
120°-130°	0.0	0.0
130°-140°	0.0	0.0
140°-150°	0.0	0.0
150°-160°	0.0	0.0
160°-170°	0.0	0.0
170°-180°	0.0	0.0
0°-90°	5575.5	100.0
0°-180°	5575.5	100.0



REPORT NUMBER: P151649

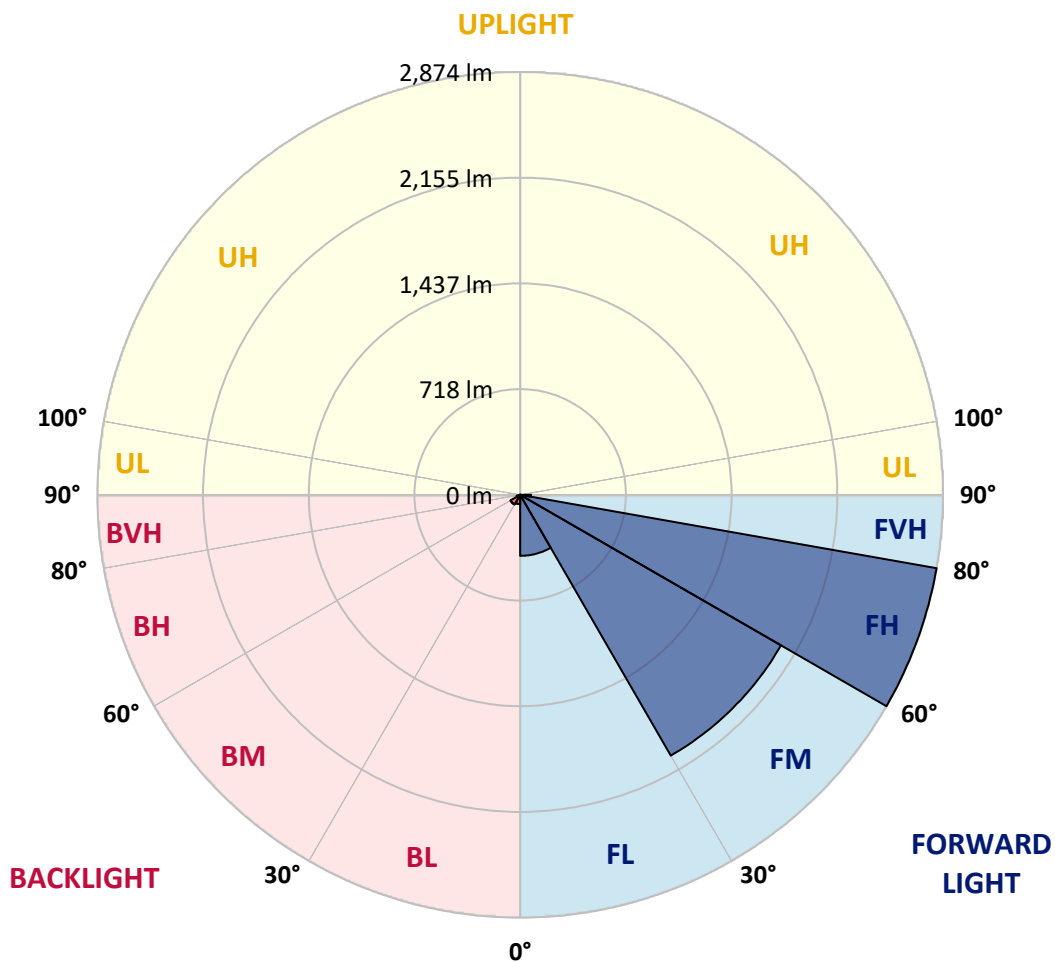
CATALOG NUMBER: VWM-E03-LED-E1-SL4-HSS-7030

LUMINAIRE CLASSIFICATION SYSTEM LUMEN TABLE AND BUG RATING:

Zone	Lumens	% Fixture	Zone Rating/Lumen Limit		
			B	U	G
FL (0°-30°)	414.9	7.4			
FM (30°-60°)	2046.8	36.7			
FH (60°-80°)	2873.6	51.5			G2/5000
FVH (80°-90°)	74.1	1.3			G1/100
BL (0°-30°)	63.1	1.1	B0/110		
BM (30°-60°)	75.8	1.4	B0/220		
BH (60°-80°)	24.2	0.4	B0/110		G0/110
BVH (80°-90°)	2.9	0.1			G0/10
UL (90°-100°)	0.0	0.0		U0/0	
UH (100°-180°)	0.0	0.0		U0/0	

BUG Rating: B0-U0-G2

Type IV Short





REPORT NUMBER: P151649
 CATALOG NUMBER: VWM-E03-LED-E1-SL4-HSS-7030

CANDELA DISTRIBUTION (FULL):

	0°	5°	10°	15°	20°	25°	30°	35°	40°	45°	50°
0°	421.1	421.1	421.1	421.1	421.1	421.1	421.1	421.1	421.1	421.1	421.1
2.5°	561.7	555.3	548.0	548.0	538.9	538.9	533.4	518.8	517.0	508.7	500.5
5°	717.0	711.5	702.4	694.1	686.8	674.1	664.9	647.6	628.4	610.1	593.7
7.5°	868.6	865.9	849.4	846.7	834.8	813.8	795.5	770.0	737.1	711.5	681.4
10°	1009.3	1002.9	999.2	983.7	966.3	943.5	915.2	884.1	845.8	805.6	762.6
12.5°	1120.7	1117.0	1100.6	1094.2	1075.9	1053.1	1017.5	977.3	938.9	886.9	836.6
15°	1203.8	1197.4	1186.4	1176.4	1154.5	1134.4	1101.5	1057.7	1011.1	954.5	894.2
17.5°	1273.2	1261.3	1258.6	1243.1	1220.2	1196.5	1160.0	1119.8	1065.0	1008.3	942.6
20°	1366.4	1349.9	1344.5	1321.6	1295.1	1262.3	1220.2	1170.0	1112.5	1050.4	982.8
22.5°	1476.0	1464.1	1452.2	1432.1	1398.3	1351.8	1290.6	1235.8	1162.7	1094.2	1021.1
25°	1631.2	1621.2	1602.0	1574.6	1532.6	1476.9	1402.9	1322.5	1236.7	1149.0	1063.1
27.5°	1781.9	1772.8	1759.1	1738.1	1690.6	1629.4	1538.1	1435.8	1327.1	1221.1	1126.2
30°	1923.5	1915.3	1901.6	1880.6	1838.6	1778.3	1675.1	1565.5	1430.3	1307.0	1192.8
32.5°	2076.0	2073.3	2057.8	2027.6	1991.1	1909.8	1797.5	1679.7	1542.6	1400.2	1266.8
35°	2248.7	2227.7	2213.0	2182.9	2120.8	2034.0	1902.5	1773.7	1629.4	1483.3	1334.4
37.5°	2394.8	2374.7	2356.4	2318.1	2242.3	2131.8	1982.9	1841.3	1692.4	1543.6	1391.9
40°	2501.7	2491.6	2469.7	2419.5	2334.5	2203.0	2042.3	1887.9	1738.1	1588.3	1438.5
42.5°	2581.1	2565.6	2540.9	2488.9	2388.4	2238.6	2066.0	1907.1	1759.1	1615.7	1468.7
45°	2610.4	2597.6	2574.7	2518.1	2409.4	2248.7	2065.1	1901.6	1760.0	1623.9	1488.8
47.5°	2593.0	2580.2	2560.1	2507.1	2400.3	2236.8	2048.6	1886.1	1750.9	1626.7	1507.0
50°	2535.5	2528.2	2512.6	2467.9	2372.0	2214.0	2034.0	1877.8	1749.1	1640.4	1532.6
52.5°	2530.0	2525.4	2506.2	2461.5	2363.8	2206.7	2032.2	1882.4	1764.6	1657.7	1550.9
55°	3091.7	3026.8	2881.6	2758.3	2555.6	2314.4	2124.5	1956.4	1830.4	1726.2	1651.3
57.5°	4394.1	4297.3	4106.4	3871.7	3405.9	2948.3	2582.0	2317.2	2186.6	2139.1	2167.4
60°	5004.2	4986.9	4956.8	4845.3	4606.9	4213.3	3774.9	3300.8	3110.9	3094.4	3152.0
62.5°	5293.8	5282.8	5292.0	5278.3	5204.3	5089.2	4963.1	4758.6	4570.4	4448.9	4191.4
65°	5427.1	5434.4	5486.5	5527.6	5536.7	5566.9	5659.1	5913.9	6100.3	5787.0	5071.8
67.5°	5088.3	5131.2	5250.9	5400.6	5576.0	5745.9	6019.9	6556.9	6939.6	6571.6	5555.9
69°	4212.4	4233.4	4525.7	4807.9	5236.2	5535.8	5933.1	6637.3	7067.5	6651.9	5517.5
70°	3316.4	3335.6	3648.8	4032.4	4756.7	5142.2	5661.9	6501.2	6947.9	6545.1	5320.3
72.5°	1496.1	1468.7	1579.2	1784.7	2572.0	3183.9	4092.7	5267.3	5732.2	5243.5	3980.4
75°	1044.9	1033.0	1044.9	1045.8	1168.2	1507.0	1901.6	2855.1	3531.0	3046.9	1901.6
77.5°	809.2	801.0	792.8	783.7	798.3	894.2	932.5	1012.9	1315.2	1244.0	725.2
80°	640.3	633.0	653.0	646.7	646.7	657.6	650.3	620.2	563.5	522.4	467.6
82.5°	297.8	299.6	299.6	325.2	391.8	457.6	478.6	448.5	398.2	338.9	273.1
85°	28.3	32.0	53.9	83.1	165.3	186.3	187.2	155.3	155.3	122.4	98.6
87.5°	0.0	0.9	0.9	0.9	8.2	22.8	19.2	5.5	2.7	2.7	4.6
90°	0.0	0.0	0.0	0.0	0.0	0.0	0.0	0.0	0.0	0.0	0.0



REPORT NUMBER: P151649
 CATALOG NUMBER: VWM-E03-LED-E1-SL4-HSS-7030

CANDELA DISTRIBUTION (continued):

	55°	60°	65°	70°	75°	80°	85°	90°	95°	100°	105°
0°	421.1	421.1	421.1	421.1	421.1	421.1	421.1	421.1	421.1	421.1	421.1
2.5°	485.9	483.2	472.2	461.2	451.2	440.2	430.2	420.1	409.2	401.0	390.9
5°	568.1	548.0	525.2	503.3	481.3	458.5	434.8	413.7	391.8	371.7	352.6
7.5°	651.2	611.9	580.9	541.6	506.0	470.4	437.5	403.7	372.6	343.4	316.0
10°	721.5	674.1	625.6	575.4	524.3	476.8	431.1	390.9	349.8	314.2	280.4
12.5°	779.1	718.8	659.4	596.4	538.9	478.6	422.0	373.6	325.2	285.0	250.3
15°	831.1	761.7	690.5	617.4	544.4	475.9	412.8	352.6	303.2	257.6	218.3
17.5°	873.2	793.7	713.3	631.1	552.6	472.2	401.0	337.9	280.4	232.9	194.5
20°	909.7	826.6	739.8	647.6	558.1	471.3	390.9	319.7	260.3	210.1	172.6
22.5°	943.5	860.4	767.2	668.6	566.3	470.4	381.8	306.0	243.0	192.7	155.3
25°	981.9	894.2	796.4	690.5	580.9	474.0	376.3	295.0	227.4	176.3	141.6
27.5°	1024.8	932.5	831.1	717.9	600.1	481.3	374.5	283.1	213.7	160.7	130.6
30°	1085.1	978.2	865.9	745.3	617.4	489.6	372.6	275.8	200.0	148.9	119.6
32.5°	1138.0	1023.0	904.2	773.6	636.6	497.8	371.7	265.8	187.2	137.0	111.4
35°	1193.7	1064.1	937.1	801.0	653.0	506.9	370.8	258.5	175.4	125.1	103.2
37.5°	1242.2	1098.8	962.7	824.8	671.3	515.1	371.7	252.1	164.4	115.1	95.9
40°	1283.3	1134.4	991.0	846.7	690.5	527.9	372.6	245.7	153.4	105.9	89.5
42.5°	1319.8	1168.2	1021.1	871.3	712.4	542.5	378.1	240.2	144.3	97.7	83.1
45°	1348.1	1199.2	1054.0	906.0	748.0	566.3	388.2	236.6	135.2	90.4	77.6
47.5°	1377.3	1244.9	1109.7	960.8	800.1	603.7	405.5	235.6	127.9	84.9	73.1
50°	1417.5	1290.6	1159.0	1016.6	847.6	642.1	426.5	236.6	118.7	79.5	68.5
52.5°	1446.7	1337.1	1223.0	1113.4	960.8	759.0	507.8	253.0	114.2	74.9	63.0
55°	1619.4	1600.2	1602.9	1621.2	1503.4	1291.5	849.4	365.3	134.3	84.9	62.1
57.5°	2283.4	2351.0	2390.2	2389.3	2194.8	1820.3	1140.8	469.5	149.8	98.6	74.0
60°	3156.5	3105.4	3033.2	2855.1	2596.7	2077.9	1276.0	505.1	129.7	78.5	67.6
62.5°	3928.3	3628.7	3363.0	3074.3	2735.5	2167.4	1303.4	502.3	113.3	59.4	47.5
65°	4409.7	3870.8	3441.5	3079.8	2680.7	2092.5	1233.0	461.2	95.9	48.4	39.3
67.5°	4524.7	3740.2	3132.8	2671.5	2239.5	1628.5	905.1	347.1	74.9	40.2	34.7
69°	4273.6	3324.6	2595.7	2072.4	1629.4	1080.5	559.9	219.2	57.5	36.5	32.0
70°	3931.1	2891.7	2114.4	1663.2	1206.5	759.0	391.8	154.4	46.6	33.8	29.2
72.5°	2529.1	1518.9	1039.4	723.4	497.8	302.3	153.4	69.4	35.6	28.3	23.7
75°	980.9	561.7	407.4	309.6	242.0	168.1	93.2	44.8	30.1	23.7	18.3
77.5°	483.2	369.9	302.3	207.3	120.6	74.9	50.2	34.7	24.7	17.4	11.9
80°	381.8	253.9	151.6	94.1	71.2	53.9	38.4	28.3	18.3	11.0	8.2
82.5°	195.5	106.9	78.5	63.9	53.0	42.0	31.1	20.1	11.9	7.3	6.4
85°	61.2	44.8	40.2	39.3	36.5	30.1	21.9	12.8	7.3	4.6	4.6
87.5°	4.6	6.4	8.2	6.4	7.3	6.4	8.2	5.5	3.7	3.7	2.7
90°	0.0	0.0	0.0	0.0	0.0	0.0	0.0	0.0	0.0	0.0	0.0



REPORT NUMBER: P151649

CATALOG NUMBER: VWM-E03-LED-E1-SL4-HSS-7030

CANDELA DISTRIBUTION (continued):

	110°	115°	120°	125°	130°	135°	140°	145°	150°	155°	160°
0°	421.1	421.1	421.1	421.1	421.1	421.1	421.1	421.1	421.1	421.1	421.1
2.5°	383.6	372.6	362.6	356.2	344.3	339.8	335.2	333.4	325.2	327.0	319.7
5°	335.2	316.0	301.4	286.8	273.1	263.0	254.8	244.8	236.6	232.9	225.6
7.5°	291.4	266.7	247.5	232.0	215.6	202.8	191.8	184.5	177.2	169.9	166.2
10°	253.0	226.5	204.6	189.1	173.5	162.6	154.4	148.9	144.3	141.6	140.7
12.5°	217.4	191.8	171.7	158.0	146.1	140.7	137.0	134.3	133.3	132.4	132.4
15°	190.0	164.4	148.9	138.8	133.3	130.6	129.7	127.9	126.0	125.1	125.1
17.5°	164.4	145.2	134.3	128.8	126.0	124.2	122.4	120.6	118.7	117.8	117.8
20°	147.0	131.5	126.0	122.4	119.6	117.8	115.1	113.3	112.3	111.4	110.5
22.5°	133.3	123.3	119.6	116.9	113.3	110.5	108.7	106.9	105.0	104.1	103.2
25°	123.3	116.9	114.2	110.5	106.9	104.1	101.4	98.6	96.8	95.9	94.1
27.5°	116.0	111.4	107.8	103.2	99.6	96.8	94.1	91.3	89.5	87.7	86.8
30°	109.6	105.0	100.5	96.8	92.2	89.5	85.9	83.1	82.2	80.4	78.5
32.5°	103.2	98.6	94.1	89.5	84.9	81.3	79.5	75.8	74.0	73.1	71.2
35°	95.9	91.3	85.9	82.2	77.6	74.0	71.2	68.5	66.7	64.8	63.9
37.5°	89.5	84.0	78.5	74.0	70.3	66.7	63.9	61.2	59.4	57.5	56.6
40°	82.2	76.7	71.2	66.7	63.0	60.3	57.5	54.8	53.0	52.1	52.1
42.5°	75.8	69.4	63.9	60.3	57.5	53.9	51.1	48.4	47.5	46.6	47.5
45°	69.4	63.0	58.5	54.8	52.1	48.4	45.7	43.8	42.9	43.8	44.8
47.5°	63.9	57.5	53.0	50.2	47.5	44.8	42.0	40.2	40.2	42.0	43.8
50°	58.5	52.1	48.4	46.6	43.8	41.1	37.4	36.5	37.4	39.3	41.1
52.5°	53.0	45.7	42.9	42.0	39.3	36.5	33.8	32.9	33.8	35.6	34.7
55°	47.5	40.2	39.3	38.4	35.6	32.0	29.2	29.2	29.2	28.3	26.5
57.5°	45.7	35.6	34.7	33.8	31.1	27.4	25.6	23.7	22.8	20.1	19.2
60°	47.5	32.0	32.0	30.1	27.4	23.7	21.0	18.3	16.4	14.6	14.6
62.5°	38.4	29.2	28.3	26.5	22.8	19.2	16.4	13.7	12.8	11.9	11.9
65°	31.1	26.5	24.7	21.9	19.2	15.5	12.8	11.0	10.0	10.0	11.0
67.5°	28.3	23.7	21.0	18.3	15.5	11.9	10.0	9.1	9.1	10.0	10.0
69°	26.5	21.9	19.2	16.4	13.7	11.0	9.1	9.1	9.1	9.1	10.0
70°	24.7	21.0	18.3	15.5	11.9	9.1	8.2	8.2	9.1	9.1	10.0
72.5°	19.2	16.4	15.5	12.8	9.1	8.2	7.3	8.2	8.2	9.1	9.1
75°	14.6	11.9	11.9	10.0	7.3	6.4	6.4	7.3	7.3	8.2	8.2
77.5°	10.0	8.2	8.2	7.3	6.4	5.5	5.5	6.4	7.3	7.3	8.2
80°	7.3	6.4	5.5	6.4	5.5	4.6	5.5	6.4	6.4	7.3	7.3
82.5°	5.5	5.5	5.5	5.5	4.6	4.6	5.5	5.5	6.4	7.3	7.3
85°	4.6	4.6	4.6	4.6	4.6	4.6	4.6	5.5	5.5	6.4	6.4
87.5°	2.7	2.7	2.7	3.7	3.7	4.6	4.6	4.6	4.6	5.5	5.5
90°	0.0	0.0	0.0	0.0	0.0	0.0	0.0	0.0	0.0	0.0	0.0



REPORT NUMBER: P151649
 CATALOG NUMBER: VWM-E03-LED-E1-SL4-HSS-7030

CANDELA DISTRIBUTION (continued):

	165°	170°	175°	180°
0°	421.1	421.1	421.1	421.1
2.5°	317.8	316.9	313.3	314.2
5°	222.9	217.4	221.0	220.1
7.5°	163.5	162.6	161.7	163.5
10°	139.7	139.7	138.8	139.7
12.5°	131.5	131.5	131.5	131.5
15°	125.1	125.1	124.2	124.2
17.5°	117.8	117.8	117.8	116.9
20°	110.5	109.6	109.6	109.6
22.5°	102.3	101.4	101.4	101.4
25°	94.1	93.2	93.2	93.2
27.5°	85.9	84.9	84.0	84.0
30°	77.6	76.7	75.8	75.8
32.5°	69.4	68.5	67.6	67.6
35°	62.1	62.1	61.2	60.3
37.5°	55.7	55.7	55.7	55.7
40°	51.1	52.1	52.1	52.1
42.5°	48.4	49.3	50.2	51.1
45°	46.6	48.4	49.3	49.3
47.5°	45.7	46.6	47.5	47.5
50°	42.0	41.1	41.1	41.1
52.5°	33.8	32.0	31.1	30.1
55°	24.7	23.7	21.9	21.9
57.5°	17.4	17.4	16.4	16.4
60°	13.7	13.7	12.8	13.7
62.5°	11.9	11.9	11.9	11.9
65°	11.0	11.0	11.0	11.0
67.5°	11.0	11.0	11.0	11.0
69°	10.0	10.0	10.0	10.0
70°	10.0	10.0	10.0	10.0
72.5°	9.1	9.1	9.1	9.1
75°	8.2	9.1	9.1	9.1
77.5°	8.2	8.2	8.2	8.2
80°	7.3	7.3	8.2	8.2
82.5°	7.3	7.3	7.3	7.3
85°	6.4	6.4	7.3	7.3
87.5°	5.5	5.5	6.4	6.4
90°	0.0	0.0	0.0	0.0

(END OF REPORT)